



文件编号 File No: TS/IM-TS4

版本 Version: 01

日期 Date: 2017.09.05

目 录

1. 警告 Warning.....	4
2. 技术参数 Product Specifications	5
3. 产品选型表 Product Selection Form	6
4. 连接器外观尺寸图 Connector Appearance Size Drawing.....	6
4.1 正极连接器 Positive Connector.....	6
4.2 负极连接器 Negative Connector	7
5. 机器组装 Assembled by Machine.....	8
5.1 剥线 Stripping	8
5.2 铆接 Crimping	8
5.3 线束组装 Cable Assembly	10
5.4 螺帽组装 Nut Assembly	10
6. 人工安装 Manual Installation	11
6.1 工具要求 Requirements of Tools.....	11
6.1.1 剥线钳 Strip Clamp	11
6.1.2 铆接钳 Rivet Clamp.....	12
6.1.3 塑料板手 Plastic Spanner.....	12
6.1.4 工具箱 Tool Box.....	13
6.2 组装步骤 Assembly Steps.....	13
7. 连接器对插及解锁 Connecting and Disconnecting	16
7.1 连接器对插 Connecting	16
7.2 连接器解锁 Disconnecting.....	17
8. 线缆状态 Cable Status	17
8.1 线缆接线 Connection of Cable	17
8.2 接合状态 The State after Connection	17
9. 包装方式 Packing.....	18
9.1 散件包装 Spare Parts Packing	18
9.2 配件袋包装 Accessory Bag Packing	18
10. 附件 Annex	19
10.1 耐化学品附表 Chemical Resistance Form.....	19

10.1.1	对产品有影响的常见化学品清单 Common Chemicals which Lead to Product Failure Easily.....	19
10.1.2	原材料测试化学品 Test with raw material	19
10.1.3	临界应变值说明 Critical stress description:	21
10.2	连接器责任免除条款 The Connector Liability Exemption Clause.....	22
10.2.1	产品运输和仓储 Product Transportation and Storage	22
10.2.2	产品安装和使用 Product Installing and Operating	23

1. 警告 Warning

1) 为防止电击，在安装和拆卸连接器时必须断开电源。For protecting against electric shock, please cut off the power when assembling and disassembling the PV connector.

2) 终端产品必须提供防电击功能。The final products must be supplied with the function electric shock proof.

3) 不要在负载下断开：在有负载的情况下，不能拔出PV插头连接器！关掉DC/AC直流-交流变频器或打开DC交流电路断路器，使PV接头连接器处于无负载的状态，则允许插拔。Do Not Disconnect under Load: PV plug connections must not be disconnected while under load. They can be placed in a no load state by switching off the DC/AC converter or breaking the AC circuit.

4) 该连接器仅适用于B类和C类多股铜导线（见NFPA NEC 70第9章，表10）。建议使用光伏专用线缆，镀锡铜芯，双层绝缘，绝缘材料为XLPE。不建议使用无镀锡电缆，不建议使用PVC电缆。This connector is suitable for use only with Class B and C stranded copper conductors (See NFPA NEC 70 Chapter 9, Table 10). The use of PV cable is recommended, Tinned copper wire, Double insulation, Insulating material: XLPE. Tin free cable is not recommended. PVC cable is not recommended.

5) 断开的连接器必须使用防尘塞，以防止灰尘和水进入。被污染的连接不能插合。Sealing cap must be used for disconnected connector, avoiding dust and water. The male and female parts must not be plugged together when soiled.

6) 插入部件防水等级IP68。它们不能长久置于水下使用。不要将连接器放在屋顶表面。Waterproof degree for inserted parts is IP68. They can't be put under water for long time. Don't put the connector on the roof of surface.

7) 连接器不能承受持续的机械拉伸，电缆应该由电缆扎带固定。The plug connection must not be subjected to continuous mechanical tension. The cable should be fixed with cable binders.

8) 产品不得在含有烃、酚、酮、氨合物等与塑料有腐蚀的环境中使用。安装过程中，禁止在连接器里添加或涂抹任何油脂及润滑剂。（见耐化学品附表）Do not use under hydrocarbon, phenol, Ammine and plastic corrosive environment.

During installation process, do not add any grease and lubricant in the connector. (See chemical resistance form)

9) 该产品应由有相应资质或经过专家培训的、具备相关安全应用规范的专业人员安装。只有在按照安装手册指定的方式组装时，连接器才被认为符合UL 6703。如果组装或拆卸TS4连接器时，不按照安装手册作业，天合将免除任何保证。The connector is considered to be in compliance with UL 6703 only when assembled in the manner specified by assembly instructions. Trina will be exempted from any warranty if TS4 connector was assembled or disassembled without following the User Manual.

2. 技术参数 Product Specifications

连接器系统 Connector system	Φ4mm
额定电压 Rated voltage	IEC 1500V&UL 1500V
额定电流 Rated current @IEC (85°C)	41A (4.0mm ² / 12AWG) 46A (6.0mm ² / 10AWG) 55A (10.0mm ² / 8AWG)
额定脉冲电压 Rated impulse voltage	16KV
环境温度范围 Ambient temperature range	-40°C~+85°C
接触电阻 Contact resistance	≤0.5mΩ
应用等级 Application degree	Class A
防护类别 Protection class	Class II
污染等级 Pollution degree	2
防护等级 Degree of Protection	IP68 (1m, 1h), 已插合 mated IP2X, 未插合 unmated
阻燃等级 Flame class	UL94-V0
绝缘材料 Insulation material	m-PPE/PA
金属材料 Contact material	铜, 镀锡 Copper, Tin-plated
接线方式 Type of termination	压接 Crimping
锁紧系统 Locking system(UL)	嵌入式 Locking type
TUV, IEC62852	R50369705/R50385924
UL, UL6703	E486009

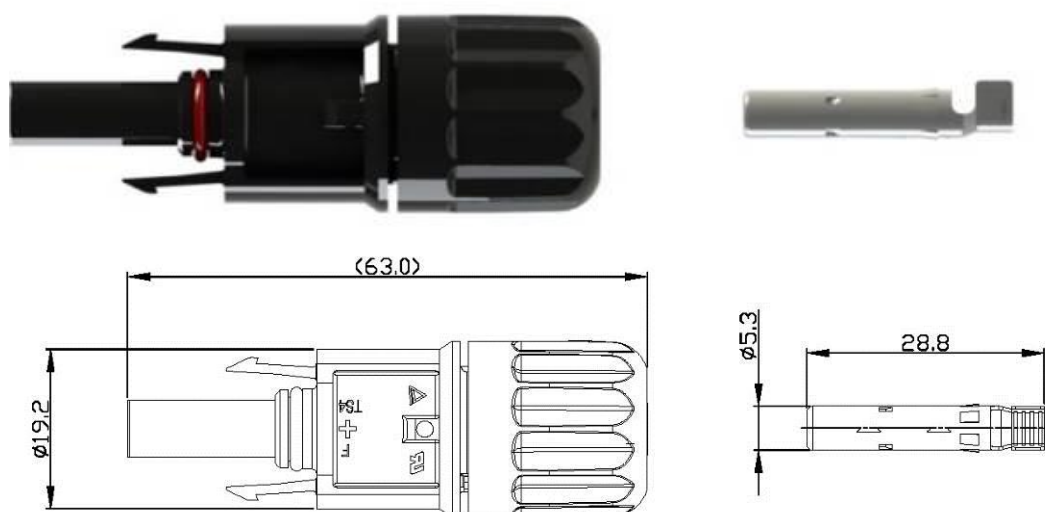
3. 产品选型表 Product Selection Form

型号 Type	料号 P/N	电缆 外径 Cable OD	导体截面积 Conductor Cross Section		工具料号 Tool P/N		
			mm	mm ²	AWG	剥线工具 料号 Strip Clamp P/N	压接工具 料号 Crimp Clamp P/N
TS4-F1	70930042	4.7-6.0	4.0/6.0	12/10	70930046	70930047	70900354
TS4-M1	70930041						
TS4-F2	70930085	5.6-6.8					
TS4-M2	70930084						
TS4-F3	70900351	6.0-6.6					
TS4-M3	70900350						
TS4-F4	70930044	6.0-7.2					
TS4-M4	70930043						
TS4-F5	70930048	7.2-8.7	10.0	8	70930049	70930051	
TS4-M5	70930045						
TS4-F6	70930052						
TS4-M6	70930050						

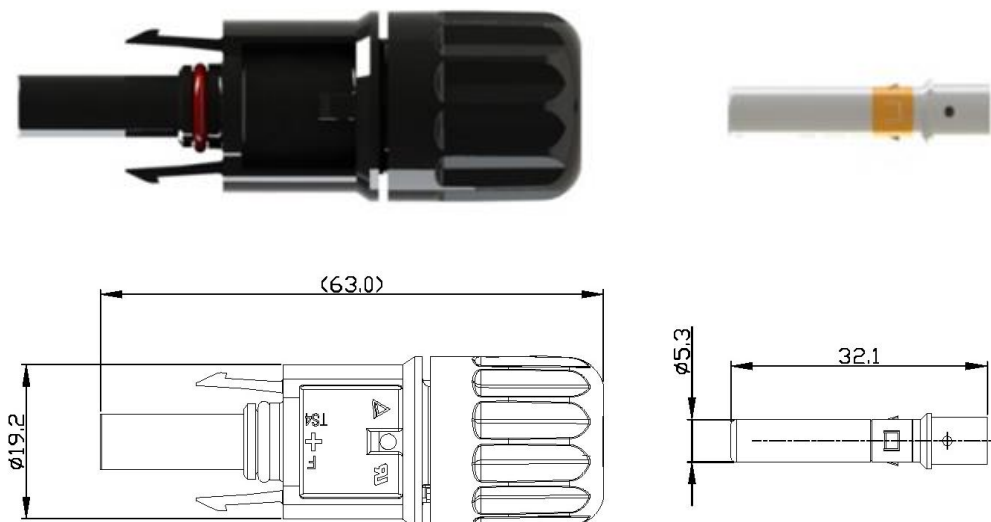
4. 连接器外观尺寸图 Connector Appearance Size Drawing

4.1 正极连接器 Positive Connector

TS4-F1、TS4-F2、TS4-F3、TS4-F4:

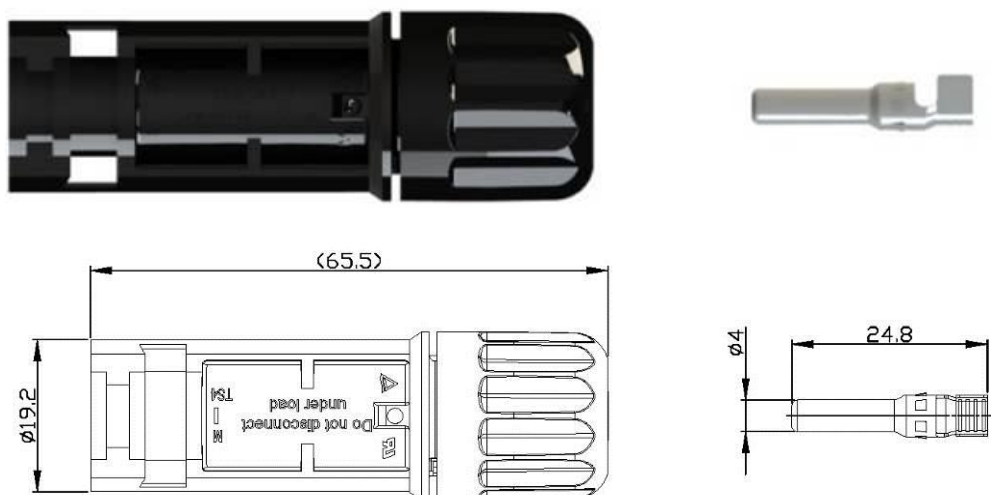


TS4-F5、TS4-F6:



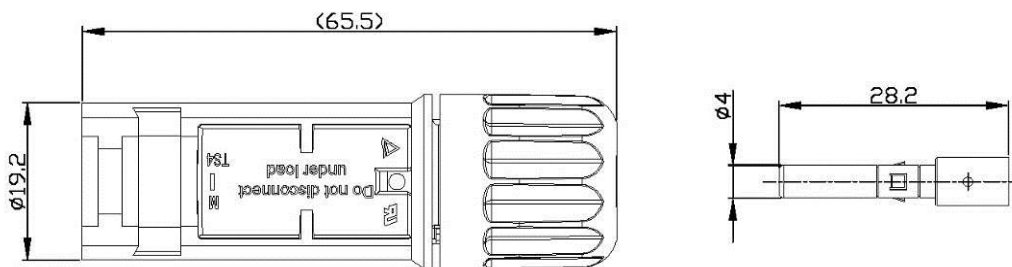
4.2 负极连接器 Negative Connector

TS4-M1、TS4-M2、TS4-M3 、TS4-M4:



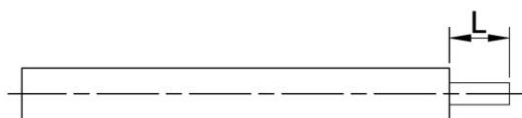
TS4-M5、TS4-M6:





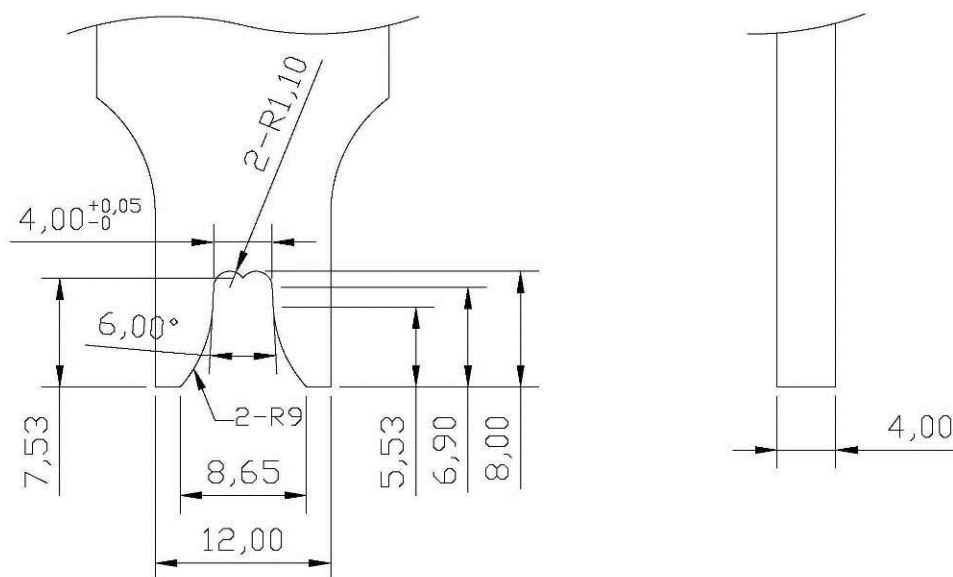
5. 机器组装 Assembled by Machine

5.1 剥线 Stripping



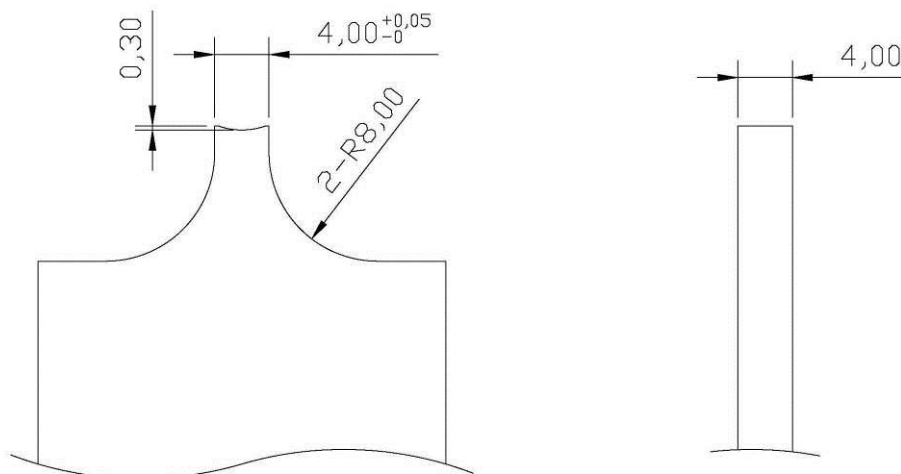
剥线尺寸 Stripping size: 6 ± 0.5 mm

5.2 铆接 Crimping

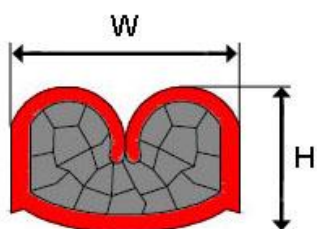


4mm²/12AWG 上刀尺寸 Tool Size(Up)

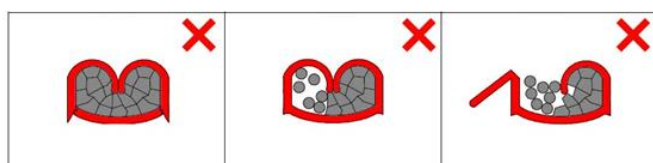
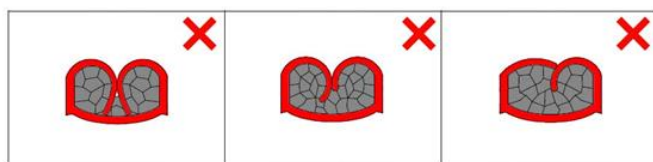
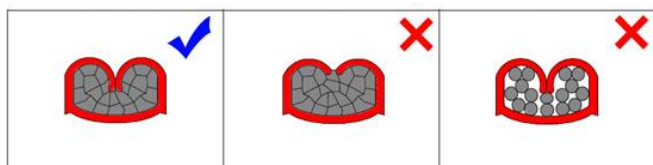
TS4 连接器安装手册 TS4 Connector Installation Manual



4mm²/12AWG 下刀尺寸 Tool Size(Down)



电缆规格 Cable Spec	铆接高度 Crimping (H)	铆接宽度 Crimping (W)	压缩比 Compression ratio	卡爪高低差 Claw height gap
4mm ²	2.1 ± 0.1mm	4.1 ± 0.1mm	加锡 With tin: 75% ≤ X ≤ 85% 不加锡 Without tin: 70% ≤ X ≤ 90%	≤ 0.2mm



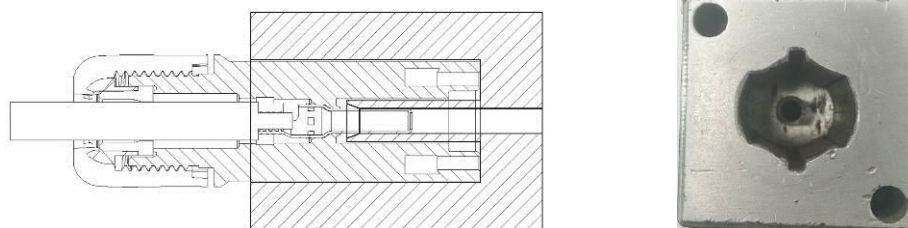
5.3 线束组装 Cable Assembly



将铆接好的线束插入正极负极绝缘本体，直至金属件与本体啮合，轻轻拉动导线，检查金属件是否啮合牢固。Push the riveted pin into the insulator until they engage. Pull lightly on the lead to check that the metal part has engaged.

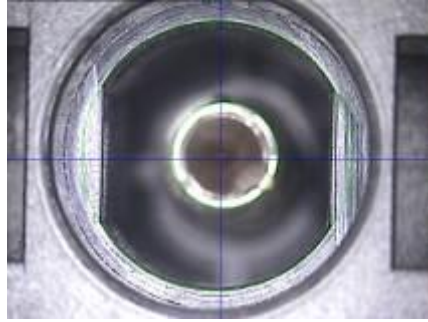
5.4 螺帽组装 Nut Assembly

在锁紧连接器螺帽时，定位治具须有导正结构(治具见下图)，方可使用。
When locking the nut of the connector, the positioning fixture shall be provided with a guide structure, see below figures.



线缆外径 Cable OD	管控间隙 Control gap	参考扭力 Reference torque	备注Remark
$6.0 \leq OD \leq 6.6 \text{ mm}$	$0 < X \leq 1.0 \text{ mm}$	$3 \pm 0.5 \text{ N} \cdot \text{m}$	操作前请校准设备的扭力，以更好满足间隙管控要求 Please calibration equipment before production, in order to meet the gap between control requirements

装配好后需要检查负极 pin 针与负极本体的同轴度。要求圆心距 $\leq 1\text{mm}$ 。After assembly, check the coaxiality of the negative pin and the negative body. Requirements of the center distance $\leq 1\text{mm}$.



6. 人工安装 Manual Installation

6.1 工具要求 Requirements of Tools

6.1.1 剥线钳 Strip Clamp



70930046



70930049



70930046



70930049

料号 P/N	钳口 Jaw	剥线范围 Crimping Range	
70930046	中间 Middle	4.0mm ²	12AWG
	右边 Right side	6.0mm ²	10AWG
70930049	右边 Right side	10.0mm ²	8AWG

6.1.2 铆接钳 Rivet Clamp



70930047



料号 P/N	钳口 Jaw	铆接范围 Riveting Range		图片 Picture
70930047	中间 Middle	4.0mm ²	12AWG	
	右边 Right side	6.0mm ²	10AWG	
70930051	可调 Adjustable	4.0/6.0/10.0mm ²	8AWG	

6.1.3 塑料扳手 Plastic Spanner



1 套 set =2 片 pc, 料号 P/N: 70900354

6.1.4 工具箱 Tool Box

料号 P/N	70930046 数量 Qty.	70930049 数量 Qty.	70930047 数量 Qty.	70930051 数量 Qty.	70900354 数量 Qty.	图片 Picture
70930082	1pc	None	1pc	None	2pcs	
70930083	None	1pc	None	1pc		

6.2 组装步骤 Assembly Steps

(1) 剥线 Stripping



剥离电缆绝缘层。Strip the insulating layer of cable. $L=6 \pm 0.5\text{mm}$.

注意不要切断绝缘层下的线芯。Be attention and not to cut off the wire core.

(2) 铆接插针插套 Crimping pin and socket

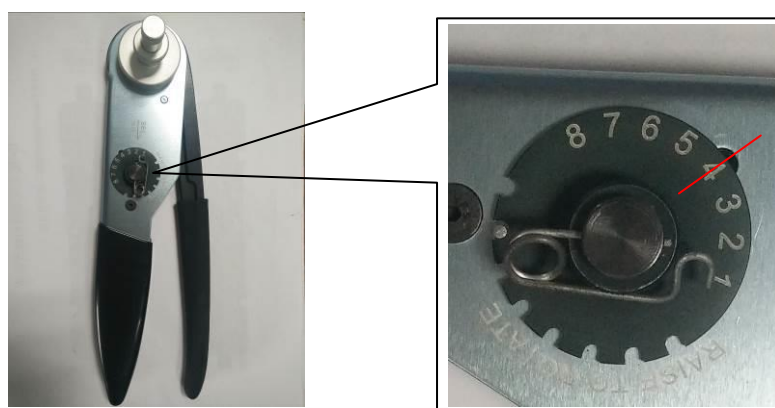


TS4 连接器安装手册 TS4 Connector Installation Manual

首先，将金属端子放在铆接工具孔内，铆接孔朝外，调节背面的限位机构，使金属端子的最外侧边缘与铆接工具齐平。然后将剥好线的线芯插入金属端子铆接孔内，需确保所有芯线都在孔内。需保证金属件和电缆线的同轴度。最后提拉铆接工具手柄，一直按到底，完成铆接。铆接后线缆拉力参照下表。铜丝都要被包扎。First, the metal terminal is placed in the rivet tool hole, the rivet hole faces outward, and the limiting mechanism of the back is adjusted so that the outermost edge of the metal terminal is flush with the riveting tool. Then insert the wire core into the rivet hole of the metal terminal, and make sure all the cores are in the hole. Ensure the coaxiality of metal parts and cables. Finally, pull the riveting tool handle and press it to the end to complete the riveting. The cable tension after riveting is referenced to the following table. All copper wires should be bandaged

线缆规格 Cable specifications	拔出力 Cable pull-out force
4.0mm ² / 12AWG	≥312N
6.0mm ² / 10AWG	≥356N
10.0mm ² / 8AWG	≥401N

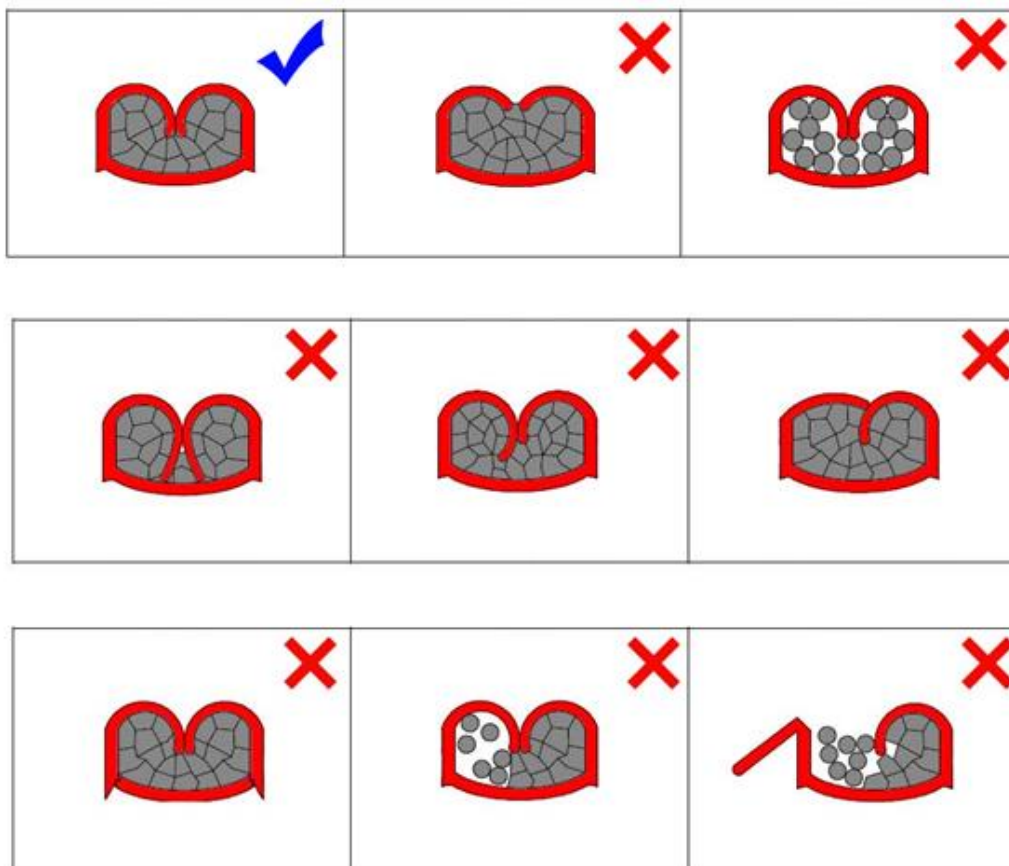
压接钳（70930051）根据不同规格线缆，需要先调节到相应的档位。Crimping pliers (70930051) according to different specifications of the cable, you need to adjust to the corresponding gear.



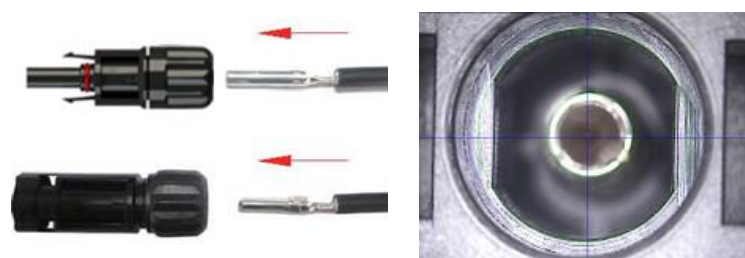
70930047

档位 Gear	线缆规格 Cable spec	连接器规格 Connector type

4	4.0mm ² /12AWG	TS4-F5/TS4-M5
6	6.0mm ² /10AWG	
8	10.0mm ² /8AWG	TS4-F6/TS4-M6



(3) 插入 Pushing



将铆接好的插头插入插座或插头的绝缘套，直至其齿合。轻轻拉动导线，检查金属件是否齿合牢固。确认负极 pin 针和负极本体同轴。Push the riveted pin into the insulator until they engage. Pull lightly on the lead to check that the metal part has engaged. Make sure the negative pin and the negative body are coaxial.

(4) 安装螺帽 Install the cable gland



先用手预拧紧，再用塑料扳手旋紧电缆螺帽。First screw it by hands, then lock tightly by plastic spanner.

型号 Type	电缆外径范围 Cable OD range	管控间隙 Control gap	参考扭力 Reference torque
TS4-F1/M1	4.7-6.0mm	0 < X ≤ 1.0mm	3 ± 0.5 N*m
TS4-F2/M2	5.6-6.8mm		
TS4-F3/M3	6.0-6.6mm		
TS4-F4/M4	6.0-7.2mm		
TS4-F5/M5	7.2-8.7mm	1.0 < X ≤ 1.8mm	
TS4-F6/M6			

注意 1: 拧螺帽时，需保证电缆线与螺帽同心。Note1: Ensure the concentricity of cable and cable gland when screw cable gland.

注意 2: 须确认负极 pin 针和负极本体同轴，再锁紧螺帽。Note2: Make sure the negative pin and the negative body are coaxial and then lock the nut.

7. 连接器对插及解锁 Connecting and Disconnecting

7.1 连接器对插 Connecting



将连接器正负极对插，直到啮合。轻轻拉动，以检查是否啮合牢固。插入力 ≤ 80N。Plug the coupling together until they engage. And pull lightly to check correct engagement. Insertion force ≤ 80N.

7.2 连接器解锁 Disconnecting



此插头连接，只能使用塑料板手工具解锁。This connection can only be unlocked with plastic spanner.

8. 线缆状态 Cable Status

8.1 线缆接线 Connection of Cable

电缆根部建议保留 20mm 未折弯长度，以免因线缆折弯产生的外力引起连接器密封件变形。In order to avoid the cable bend force lead to a visible deformation in the sealing portion of the insulation, the cable need keep at least 20mm straight length.



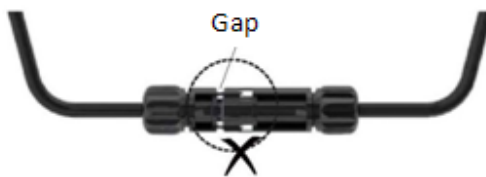
Wrong way for the cable



Right way for the cable

备注：请参考电缆生产商的最小弯曲半径的详细要求。Remarks: Please refer to the detailed instruction of the min bend radius given by cable manufacturer.

8.2 接合状态 The State after Connection



Incorrect joint diagram



Correct joint diagram

9. 包装方式 Packing

9.1 散件包装 Spare Parts Packing



一般每纸箱（590*390*170mm）中蓝色自封袋装 400 个正极连接器，透明自封袋装 400 个负极连接器。400 个插针和 400 个插套各装一小塑料袋。Generally, in each box, blue self sealing bag has 400 positive connectors. The transparent self sealing bag has 400 negative connectors. The 400 pins and the 400 Sockets are each fitted with a small plastic bag.

9.2 配件袋包装 Accessory Bag Packing



每个包装袋含 2 对连接器和 1 个扳手，放置在组件包装箱内。One spanner and two sets of TS4 connectors are put in a small packing bag.

10. 附件 Annex

10.1 耐化学品附表 Chemical Resistance Form

10.1.1 对产品有影响的常见化学品清单 Common Chemicals which Lead to Product Failure Easily.

化学品名 Chemical Name	测试结果 Test Result
润滑油 Lubricating oil	不兼容 Incompatible
防锈油 Rust-proof oil	不兼容 Incompatible
冲压油 Stamping oil	不兼容 Incompatible
黄油 Grease	不兼容 Incompatible
机油 Engine oil	不兼容 Incompatible
柴油 Diesel	不兼容 Incompatible
食用油 Cooking oil	不兼容 Incompatible
WD40	不兼容 Incompatible
香蕉水 Banana oil	不兼容 Incompatible
油性封孔 Oil sealing agent	不兼容 Incompatible
乙酸乙酯 Ethyl acetate	不兼容 Incompatible

10.1.2 原材料测试化学品 Test with raw material

化学品名 Material Name	制造商 Manufacturer	临界应变值(%) Critical stress@23°C	等级 Grade
黏合剂 Binder			
KE45W	Shin-Etsu Chemical	>1.5	A
KE4828W	Shin-Etsu Chemical	>1.5	A
TSE382W	Momentive	>1.5	A
TSE392W	Momentive	>1.5	A
PV 804	Dow Corning	>1.5	A
PV 8101	Dow Corning	>1.5	A
APF125	Wacker Chemical	0.6	B
VHB TAPE 4941	3M	>1.5	A

TS4 连接器安装手册 TS4 Connector Installation Manual

填充剂 Filler			
KE-200 CX-200	Shin-Etsu Chemical	>1.5	A
KE-210F CAT-210	Shin-Etsu Chemical	>1.5	A
PV7010	Dow Corning	1.5	A
脂类 Greases			
Z260	HASCO	1.2	A
A7002	HASCO	1.2	
油类 Oils			
Silicone Oil KF96	Shin-Etsu Chemical	>1.5	A
Silicone Oil SH200	Dow Corning	>1.5	A
Machine Oil KV46	Nippon Oil	0.7	B
Dia Cut	Oelheld	0.6	B
脱模剂 Mold release agents			
Pelicoat B	Chukyo-Kasei	>1.5	A
Pelicoat S-6	Chukyo-Kasei	0.39	C
黏合剂 Binder			
Chemlok	LORD	0.25	C
表面活性剂 Surfactant			
Charmy V quick	Kao	1.0	A
醇类 Alcohols			
甲醇 Methyl alcohol	/	1.2	A
乙醇 Ethyl alcohol	/	1.2	A
异丙醇 Isopropyl alcohol	/	0.9	B
酸碱盐类 Acids, Alkalis, salts			
盐酸(50% sol.) hydrochloric acid	/	>1.5	A
硫酸(50% sol.) Sulfuric acid	/	>1.5	A
硝酸(50% sol.) Nitric acid	/	>1.5	A
磷酸(60% sol.) Phosphoric acid	/	>1.5	A
醋酸(50% sol.) Acetic acid	/	>1.5	A
氨水(25% sol.) Ammonia	/	>1.5	A

TS4 连接器安装手册 TS4 Connector Installation Manual

氢氧化钠(10% sol.) Sodium hydroxide	/	>1.5	A
氯化钠(saturated sol.) Sodium chloride	/	>1.5	A
磷酸铵(saturated sol.) Ammonium phosphate	/	>1.5	A
脂肪族碳氢化合物 Aliphatic hydrocarbons			
正庚烷 n-Heptane	/	0.2	C
正己烷 n-Hexane	/	0.15	D
环己烷 Cyclohexane	/	0.1	D
液体石蜡 Liquid paraffin	/	0.39	C
卤族碳氢化合物 Halide hydrocarbons			
佛利昂 Freon	/	<0.10	D
四氯化碳 Carbon tetrachloride	/	<0.10	D
氯仿 Chloroform	/	<0.10	D
酮类 Ketones			
丙酮 Acetone	/	<0.10	D
甲基乙基酮 Methyl ethyl ketone	/	<0.10	D
芳香族碳氢化合物 Aromatic hydrocarbons			
甲苯 Toluene	/	<0.10	D
二甲苯 Xylene	/	<0.10	D
甲酚 Cresol	/	0.8	B
其他有机物 Other organics			
磷酸三丁酯 Trybutyl phosphate	/	0.11	D
汽油 Gasoline	/	<0.10	D
煤油 Kerosene	/	0.2	C

10.1.3 临界应变值说明 Critical stress description:

临界应变值(%) Critical stress	说明 Description	等级 Grade
>1.0	开裂的次要因素 Secondary factor of cracking.	A
1.0-0.5	基本上在应力集中区域，会有一些开裂。需要特别注意化学品的使用	B

	Basically, there will be some cracking in the stress concentration area. Need to pay special attention to the use of chemicals.	
0.5-0.2	不管有静态或动态的应力，都存在开裂的风险。特别注意不要与化学品接触 Regardless of the static or dynamic stress, there is a risk of cracking. Special attention should not be in contact with chemicals.	C
<0.2	与化学品接触，会有很高的开裂风险 Exposure to chemicals will have a high risk of cracking.	D

备注：对于上表未列明的化学品，需经确认无影响后再使用。

Note: Chemicals which is not contained in the table should only be used after confirm it has no influence to the product.

10.2 连接器责任免除条款 The Connector Liability Exemption Clause

有违反下列情况之一者，并导致产品出问题，造成任何损失，我公司将不承担任何责任。There exist following case, and lead to product goes wrong, any loss caused, product manufacturers will not take any responsibility,

10.2.1 产品运输和仓储 Product Transportation and Storage

- 产品在运输、仓库过程中，不可与耐化学品附表中有关化学品存放在一起，使产品经受这些化学品污染；Products in the process of transportation, warehouse, cannot store with "attachment 2" in the table of chemicals together that lead the product pollution with these chemicals;
- 产品在运输、仓库过程中，不可对产品进行过分承压、撞击等破坏产品行为；Products in the process of transportation, warehouse, cannot pressure too much on products and such as impact damage behavior;
- 产品在运输、仓库过程中，常温存储，应注意避光、防水、防尘等方面防护，以免降低产品相关性能，电站现场应特别注意；Products in the process of transportation, warehouse, should room temperature storage, avoid light, should waterproof, dustproof, and should be paid attention to protection, so as not to reduce product performance, pay special attention to product when in power station;

4. 产品正常存储时间 1 年。Product is recommendation finished installation in one year.

10.2.2 产品安装和使用 Product Installing and Operating

1. 产品正常工作环境温度-40~+85℃； The product health working environment temperature - 40 ~ + 85 ℃；
2. 2.2 产品现场安装，需按照本手册操作； The Product installing should be in accordance with the Trina Solar product installation instructions；
3. 产品在沿海、沙漠等粉尘、粉尘、灰尘多的地域使用，产品出厂前必须带防尘塞； Products in the coastal, desert dust, dust more regional use, before the products leave the factory, they must take the dust cap；
4. 产品在屋顶电站使用时，连接器不可直接放在屋顶表面。Products used in roof power station, the connector shall not directly on the surface of the roof.
5. 产品与化学品兼容性见耐化学品附表。Products and chemical compatibility see Chemical resistance form.
6. 连接器在未耦合情况下，产品将不能满足任何 IP 防护等级，也不能正常使用。The connector under the condition of disconnect, the product will not be able to meet any IP protection grade, also can't normal use.
7. 产品插合后满足 IP68 防护等级要求，但不能长期置于水下或屋顶上工作。Products meet IP68 degree of protection requirement after connects, while it can't work under water for a long time, and it can't be put on the surface of roof to avoid the strong sunlight.
8. 连接器在未对插的情况下，不可长时间放置于户外，这样可能会造成金属件腐蚀，并使连接器性能降低。Connector in the case of disconnect, should not place in the outdoor for long time, so may be the cause of the corrosion of the metal, and lower the connector performance.
9. 连接器在户外安装、使用过程中，如果不能及时对插，请做好连接器防护工作，将连接器端口插上防尘塞，防止连接器受到水、尘等的污染，影响产品使用性能。Connector in the process of outdoor installation and use, if not to connect in time, please do a good job in the connector

protection, put on the dust cap and protect the connector from water, dust and other pollution, affect the product performance.

10. 连接器在安装、使用过程中，不可将连接器过分碰撞，拖在水中、草丛中、地上等。防止连接器使用前，内部受到污染，降低产品性能。

Connector in the process of installation and use should not be collision, drag in the water, grass, and the ground to prevent the pollution of inside the connector before use, reduce the product performance.

11. 天合品牌的连接器必须与天合指定的连接器，进行正、负极对插。

Connectors of Trina Solar brand must be connected with connectors appointed by Trina Solar.

此免责条款最终解释权归常州天合光能有限公司。This disclaimer final explanation right belongs to the Trina Solar

常州天合光能有限公司有权随时对本说明书中可能出现的打印错误，产品技术改进和创新等方面作出修改，这些改动恕不另行通知。同时各语言版本翻译的不详之处，请以中文版为准。Trina Solar has the rights to make certain correction for the printing errors, improvements and innovation for the products, and there will be no prior notice when these changes happen. If there was any misunderstanding for the version in different language, please regard Chinese version as the right one.

可以在 <http://www.trinasolar.com/cn/> 上查看、下载和打印相应的说明书。The appropriate instructions can be viewed, downloaded, and printed at

<http://www.trinasolar.com/cn/>.

天合网点信息 Regional distribution of Trina Solar:

常州天合光能有限公司 Changzhou Trina Solar Energy Co., Ltd

地址 ADD: 中国江苏省常州市新北区天合路2号 No. 2 Tian He Road, Electronics Park, New District, Changzhou, Jiangsu 213031, P. R. China

邮编 PO No: 213031

网址 Website: www.trinasolar.com

区域 Region	地址 Address	电话 Telephone Number	邮箱 Mail Address

EU	Regus East Midlands Airport Pegasus Business Park Herald Way, Castle Donington Derby, DE74 2TZ - United Kingdom	+44 1332 63 8799	EUservice@trinasolar.com
	Richtistrasse 11 8304 Wallisellen- Switzerland	+41 43 299 6800	
	Einsteinring 26 - 85609 Aschheim - Germany	+49 89 1228 49250	
	C/Caleruega, 79, 3 ºA, 28033, Madrid ,SPAIN	+34 91 133 59 39	
US	100 Century Center, Suite 501 San Jose CA 95112	+1 800 696 7114	NAService@trinasolar.com
Japan	21F World Trade Center Building 2-4-1 Hamamatsu-cho, Minatu-ku,Tokyo 106-6121	+81 3 3437 7000	Japanservice@trinasolar.com