

## SG2500HV-MV

## SG3000HV-MV



SUNGROW Inverter, Designed For TrinaPro



### High Yield

- Efficient three-level topology,max.system efficiency up to 99%
- 1or2 MPPT,wide MPP voltage range
- Full power opwer operation without derating at 50°C
- One inverter unit fails,the other units continue operation



### Saved Investment

- DC 1500V , AC 600V,low system initial investment
- 20-foot container design,no need to build extra inverter house
- Integrated MV transformer and LV auxiliary power supply



### Easy O&M

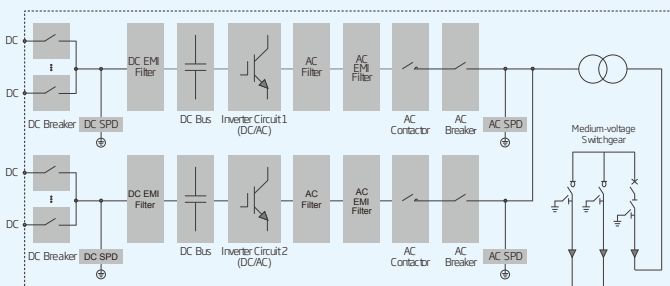
- Integrated zone current monitoring function for fast trouble shooting
- Module design and front service,easy for maintenance
- DC circuit breaker design for convenient maintenance



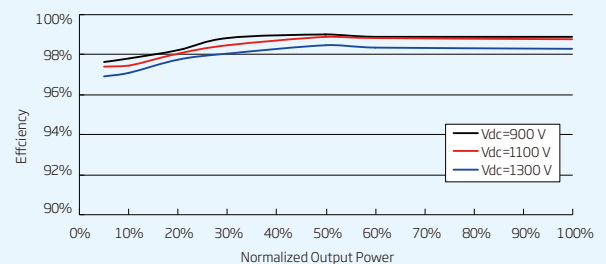
### Grid Support

- Compliance with standards:CE,IEC 62109
- Low/High voltage ride through(L/HVRT)
- Active&reactive power control and power ramp rate control

### Circuit Diagram



### Inverter Efficiency Curve



# SG2500HV-MV/SG3000HV-MV

## Input(DC)

	SG2500HV-MV	SG3000HV-MV
Max.PV input voltage	1500V	
Min.PV input voltage/Startup input voltage	800V/840V	900V/940V
MPP voltage range for nominal power	800-1300V	900-1300V
No.of independent MPP inputs	1 or 2	
No.of DC inputs	16-24	
Max.PV input current	3508A	
Max.DC short-circuit current	4210A	

## Output(AC)

Nominal AC power	2500KW(at 50°C)	3000KW(at 50°C)
Max.AC output power at PF=1	2750KW(at 50°C)	3000KW(at 50°C)
Max.AC apparent power	2750KVA(at 50°C)	3000KVA(at 50°C)
Max.AC output current	2886A	
AC voltage range	550V	600V
Nominal grid frequency/Grid frequency range	50Hz/45-55Hz,60Hz/55-65Hz	
THD	<3%(at nominal power)	
DC current injection	<0.5%In	
Power factor at nominal power/Adjustable power factor	>0.99/0.8 leading-0.8 lagging	
Feed-in phases/Connection phases	3/3	

## Efficiency

Inverter Max. efficiency/Inverter Euro.efficiency	99.0%/98.7%
---	-------------

## Transformer

Transformer rated power	2500KVA	3000KVA
Transformer max power	2750KVA	3000KVA
LV/MV votage	0.55KV/10-35KV	0.6KV/10-35KV
Transformer vector	Dy11	
Oil type	Mineral oil(PCB free) or degradable oil on request	

## Protection

DC reverse connection protection	Yes
DC input protection	Circuit breaker
Inverter output protection	Circuit breaker
AC output protection	Circuit breaker*/Load switch + fse**
Overvoltage protection	DC Type II/AC Type II
Grid monitoring/Ground fault monitoring	Yes/Yes
Insulation monitoring	Yes
Overheat monitoring	Yes
Anti-PID function	Optional

## General Data

Dimensions(W*H*D)	670*2896*2438mm
Weight	17T
Degree of protection	IP54
Auxiliaey power supply	220Vac,2KVA/Optional:380Vac,up to 15KVA
Operating ambient temoerature range	-35 to 60°C(>50°C derating)
Allowable relative humidity range(non-condensing)	0-95%
Cooling method	Temperature controlled forced air cooling
Max.operating altiude	1000m(standard)/>1000m(optional)
Display	Touch screen
Connection	Standard:RS485,Ethernet;Optional:optical fiber
Compliance	CE,IEC 62109
Grid Support	LVRT,HVRT,active & reactive power control and power ramp rate control
Type designation	SG2500HV-MV-S-10/SG2500HV-MV-C-10 SG3000HV-MV-S-10/SG3000HV-MV-C-10